



Achieve Warehouse Management Handheld and Emulator Installation Guide

PRESENTED BY
ACHIEVE IT SOLUTIONS



Copyright 2016, 2012 by Achieve IT Solutions

These materials are subject to change without notice. These materials are provided by Achieve IT Solutions for informational purposes only, without representation or warranty of any kind, and Achieve IT Solutions shall not be liable for errors or omissions with respect to the materials.

The use and copying of this document and the associated computer software is subject to Achieve IT Solutions customer registration agreement. Any other use is prohibited.

Achieve One is a trademark of Achieve IT Solutions.

SAP Business One is a trademark of SAP AG.

All other trademark or service marks are the property of their respective owners.

Achieve IT Solutions

640 Belle Terre Road

Building B

Port Jefferson, New York 11777

631-543-3200

Table of Contents

Handheld Installation	1
Prerequisites.....	1
Handheld Device Setup	1
Workstation Setup.....	2
New Install.....	3
Upgrade.....	10
Emulator Installation	11
New Install.....	11
Upgrade.....	16

Handheld Installation

Prerequisites

Before you can install Achieve Warehouse Management on your handheld, you will need to complete a couple of things.

Handheld Device Setup

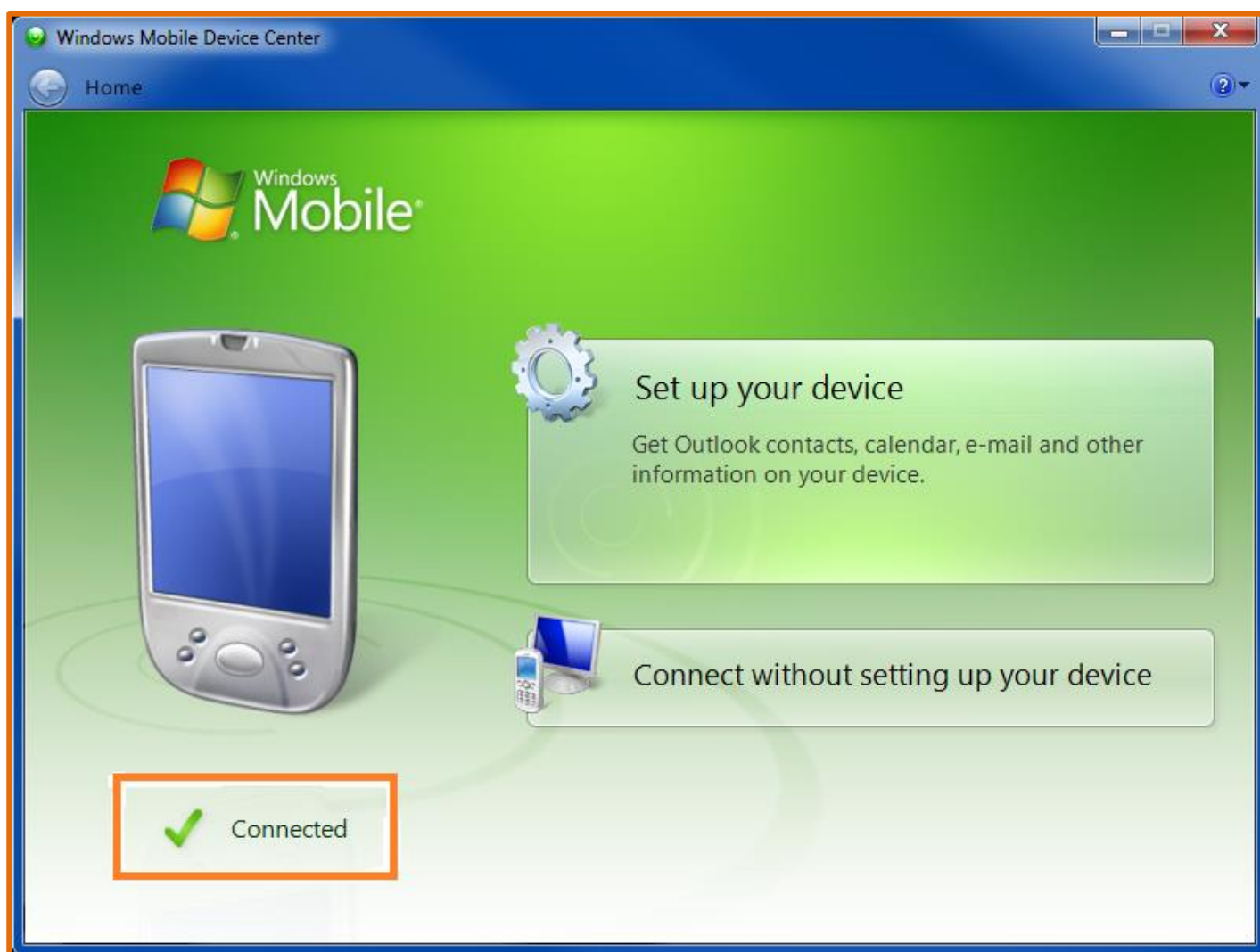
The handheld device must be configured to connect to your network before WMS can be installed and used. To test this, open up Internet Explorer on the Handheld and connect to a couple of websites to make sure it is network enabled. If you cannot get onto the internet, please contact your IT Department; the installation cannot continue if the handheld cannot connect to your network.



Workstation Setup

First connect the handheld cradle to the workstation and place the handheld in the cradle. Your workstation may begin to install the handheld device drivers and/or Microsoft Active Sync (Windows XP) or Windows Mobile Device Center (Windows Vista or later). If it does not automatically install, check your workstation to see if it has already been installed. If you cannot find it, go to Microsoft's website to download and install it.

Once you have everything installed, open Active Sync or Windows Mobile Device Center on your workstation to confirm the handheld is connected.

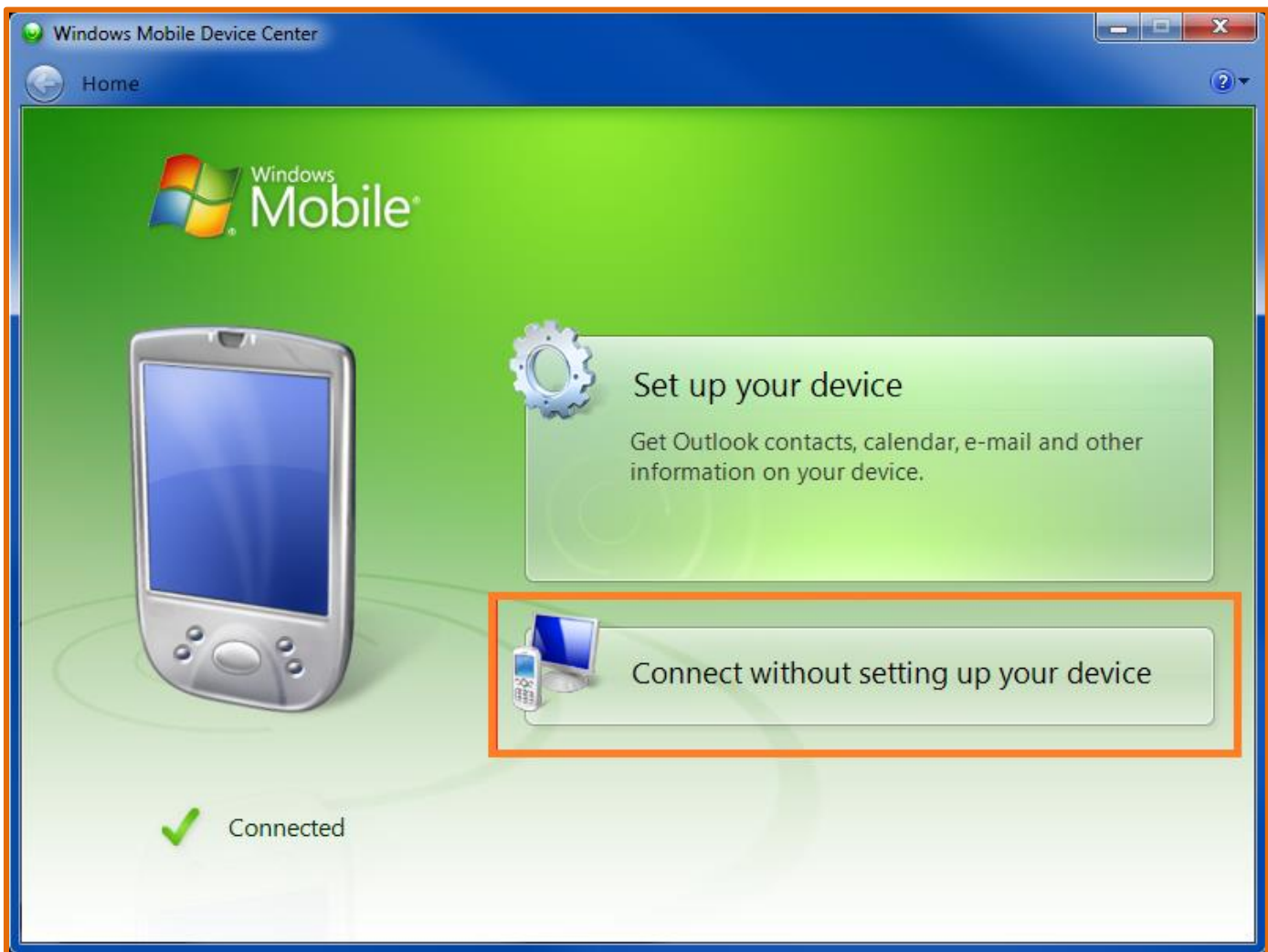


Now that the handheld can connect to your network, and the cradle is connected to your workstation, we can begin the installation.

New Install

First we need to copy the installation file (AISWM_XXXXXX.CAB) onto the handheld. The installation files are normally located on your SAP server under C:\SAPInstall\AIS Drops. Note, if you are unsure which version number you should be installing, contact your Achieve IT Support team.

Once we have the correct installation file, open the workstation program we installed earlier; for this example I will be using Windows Mobile Device Center. After it opens, click on “Connect without setting up your device”.



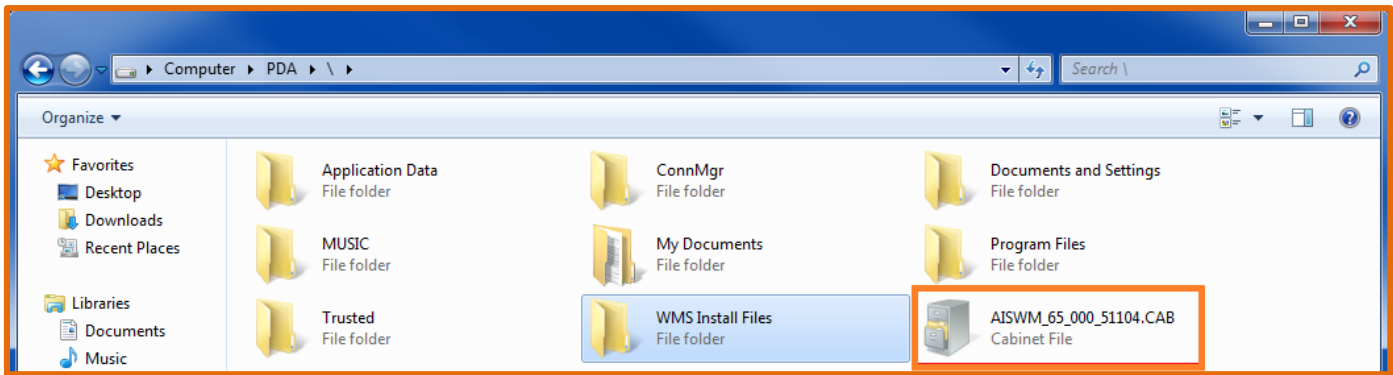
Next go to “File Management” and click on “Browse the contents of your device”.



That will open up Windows Explorer with the contents of your handheld displayed. Double-click on the \ folder.



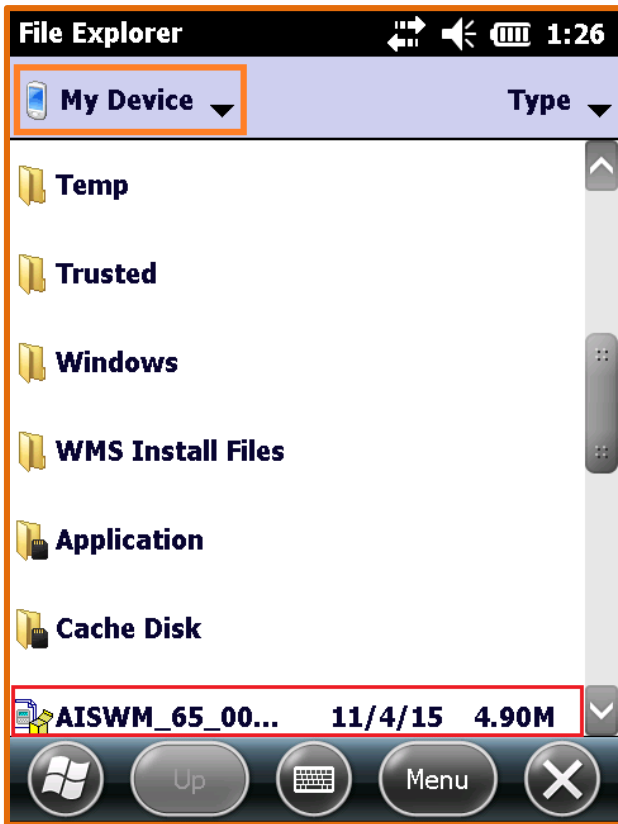
Once you are inside the \ folder, you will be able to copy and paste the installation file onto the handheld. Note, that although not required, you may want to create a folder in this location to help keep your installation files organized.



Now that the installation file has been copied, remove the handheld from the cradle. On the handheld, go to the Start Menu and select “File Explorer”.

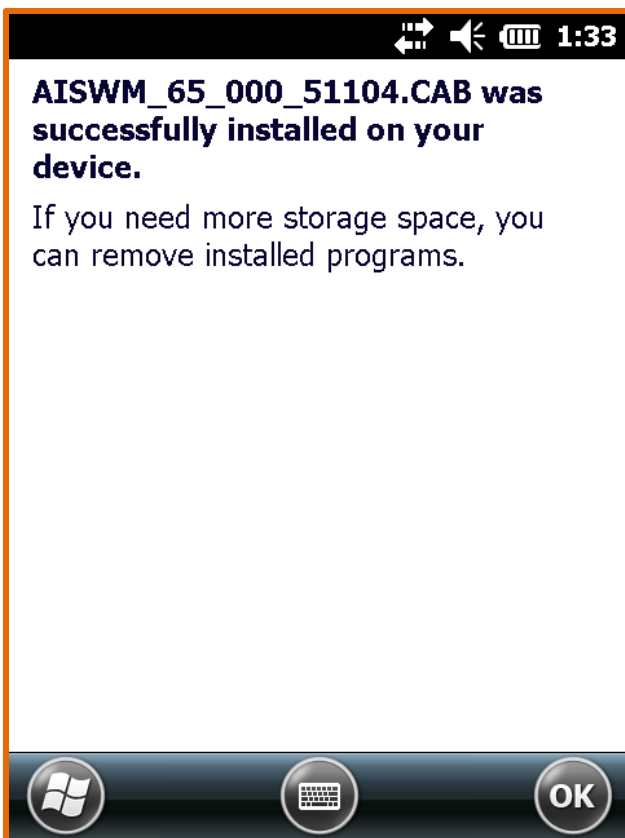
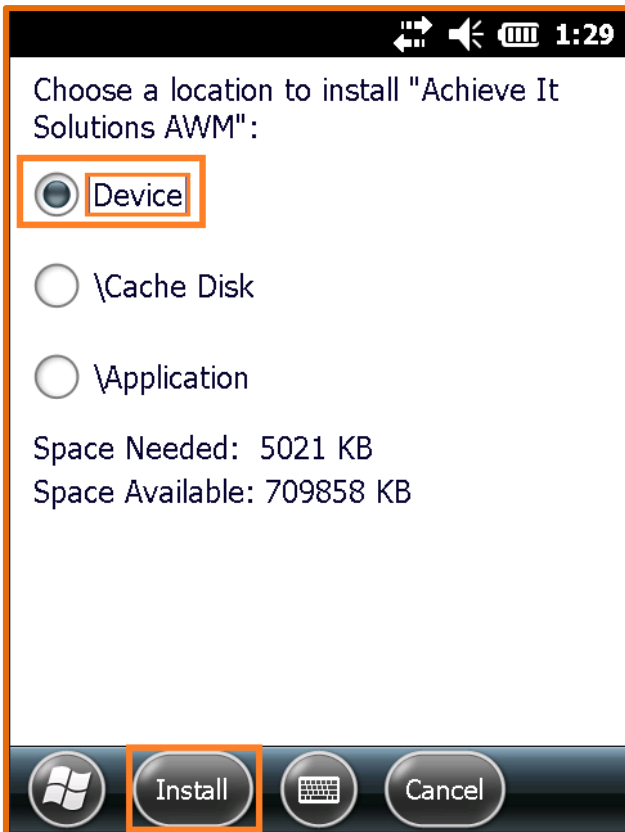


In the File Explorer, browse until you find the installation file. Note, you may have to use the “Up” button to get to the root “My Device” folder to find it. Once you find the installation file, select it.



It will ask you where you want to install the file. Make sure you choose “Device” and then select “Install” on the bottom.

It will then begin to install Achieve Warehouse Management on your handheld. Note that during the installation, if the handheld is missing any required versions of Microsoft.Net Framework, it will alert you. If this happens, you may need to contact your IT department to help get the specified version installed on the handheld.



Head back to the Start menu and you should see the AWM icon. Select it.



That will bring you to the setup screen for WMS. First enter in a Handheld ID; it is important that all handhelds have unique Handheld IDs or it may cause conflicts. There are then four fields related to the SQL server connection. The only one that is required is the SQL Server Name, but you may need to have the other three filled in depending on your network settings. Once all your information is entered, hit Save and it will let you know if it can connect or not. If it does not connect you may need to contact your IT department to confirm the connection information.

Once it is connected you will see that the “Login” button becomes available to select.

Wireless 65.000.51104

Handheld ID

SQL Server Name

SQL Server IP

SQL Instance

SQL Instance

SQL Instance

SQL Instance

Network ok

Connection established

Save **Exit** **Login**

Selecting the Login button will bring you to the Login screen for WMS. Select your database, then enter in your User ID, Password, and Warehouse. Once all that information is entered you should be able to log in and then your installation is complete.

 **Warehouse Management**

Company

User ID

Password

Warehouse

Language

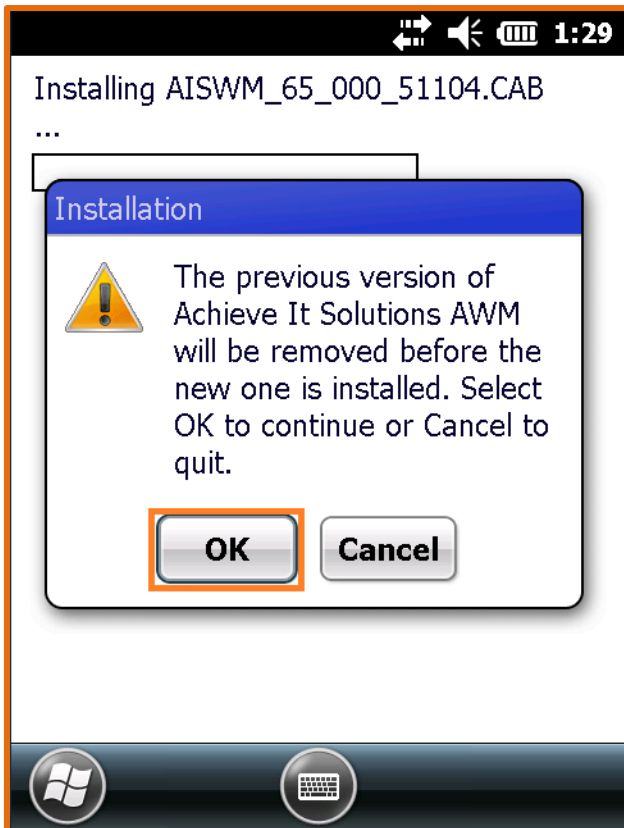
Setup **Exit** **Login**

Version 65.000.51104
Date 12/31/2015 Time 1:54:51

Upgrade

When upgrading your version of WMS on the handheld, the process is exactly the same except for 2 small differences.

First, when you are in the handheld and you select the installation file, it will let you know that it is going to uninstall the older version before it installs the new one. That is exactly what we want anyway so just select OK when prompted.



The second is that even though it un-installs the old version, it should save your connection information from the setup screen, so you should not have to enter that in again.

Other than that, just follow the new install process and you will be all set.

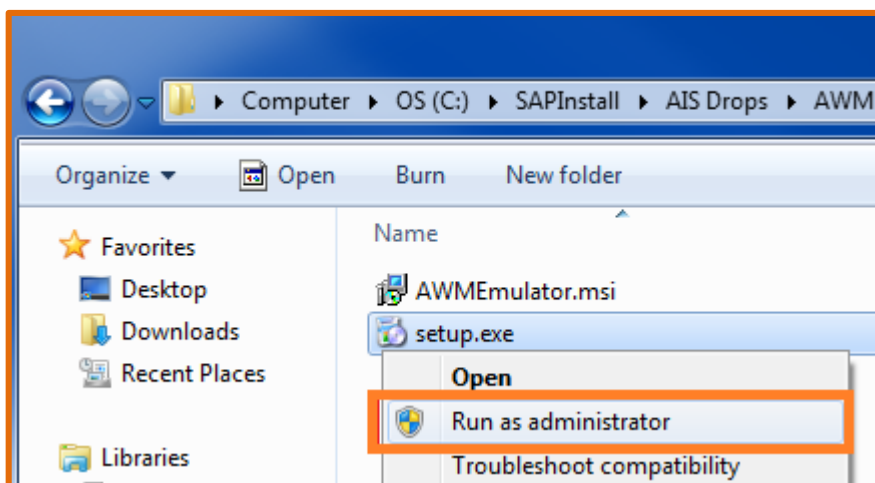
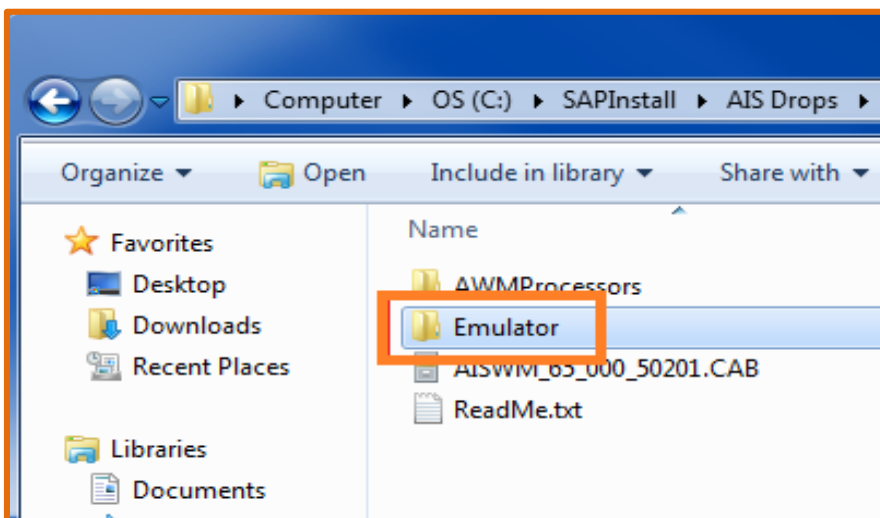
Emulator Installation

To help troubleshoot handheld issues, we created an emulator that you can install on the SAP Server or Workstations. This will emulate the Achieve Warehouse Management handheld program and functionality right on the desktop. This section will discuss how to install it.

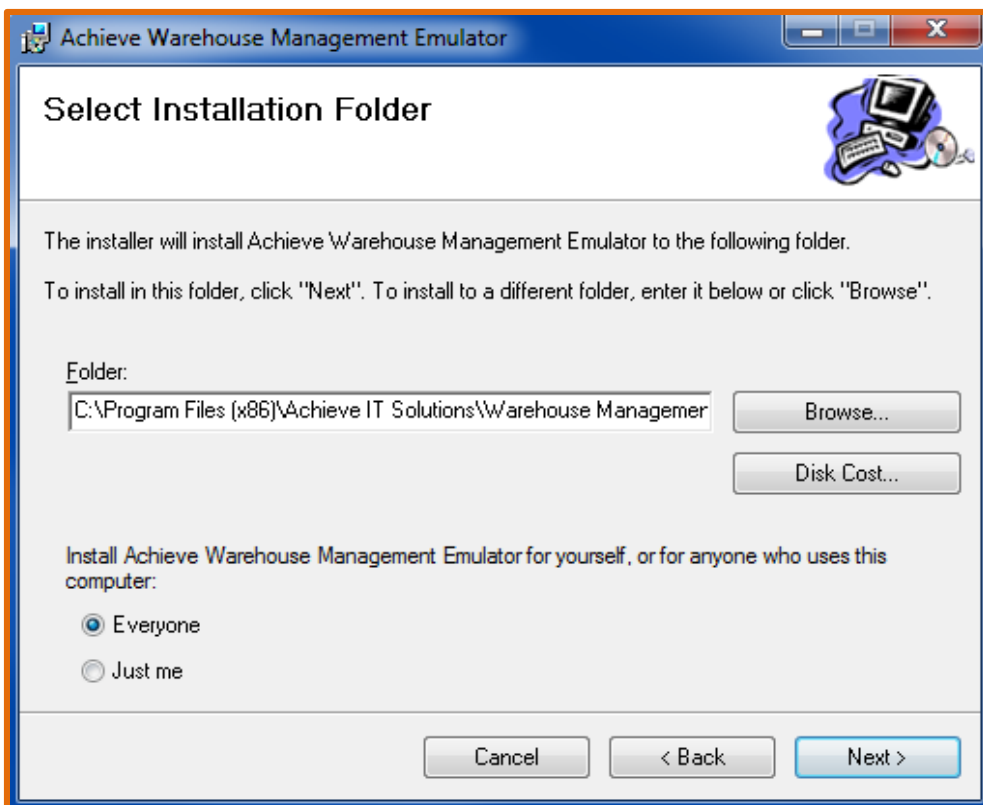
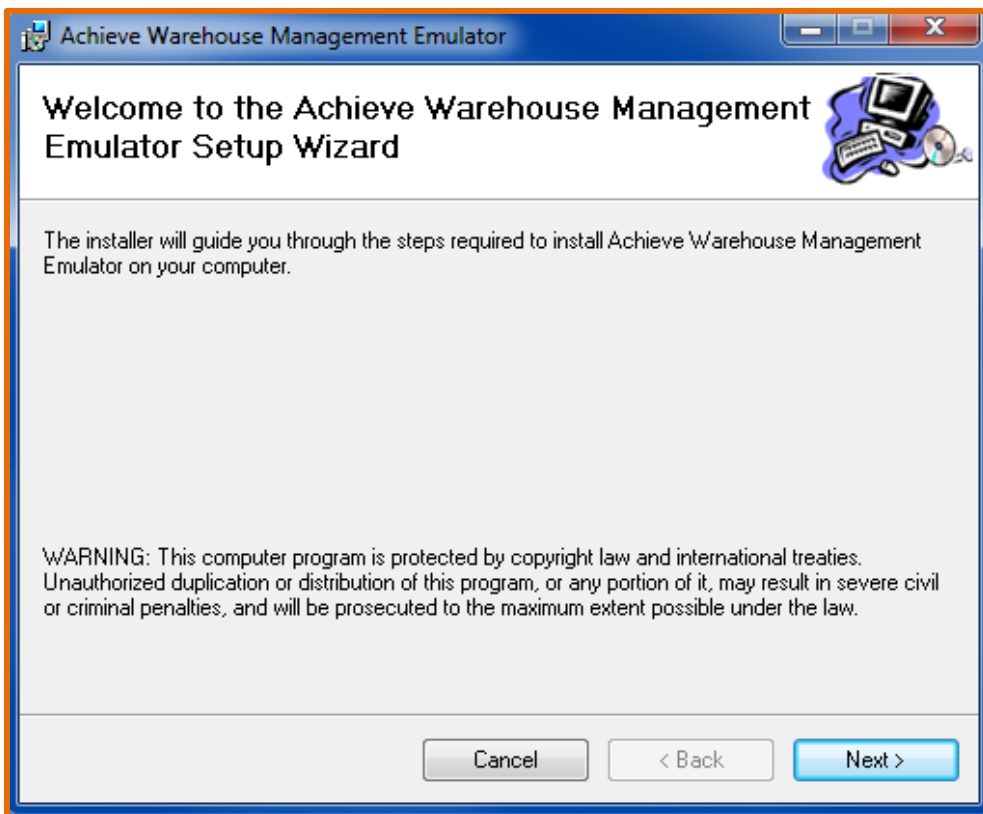
New Install

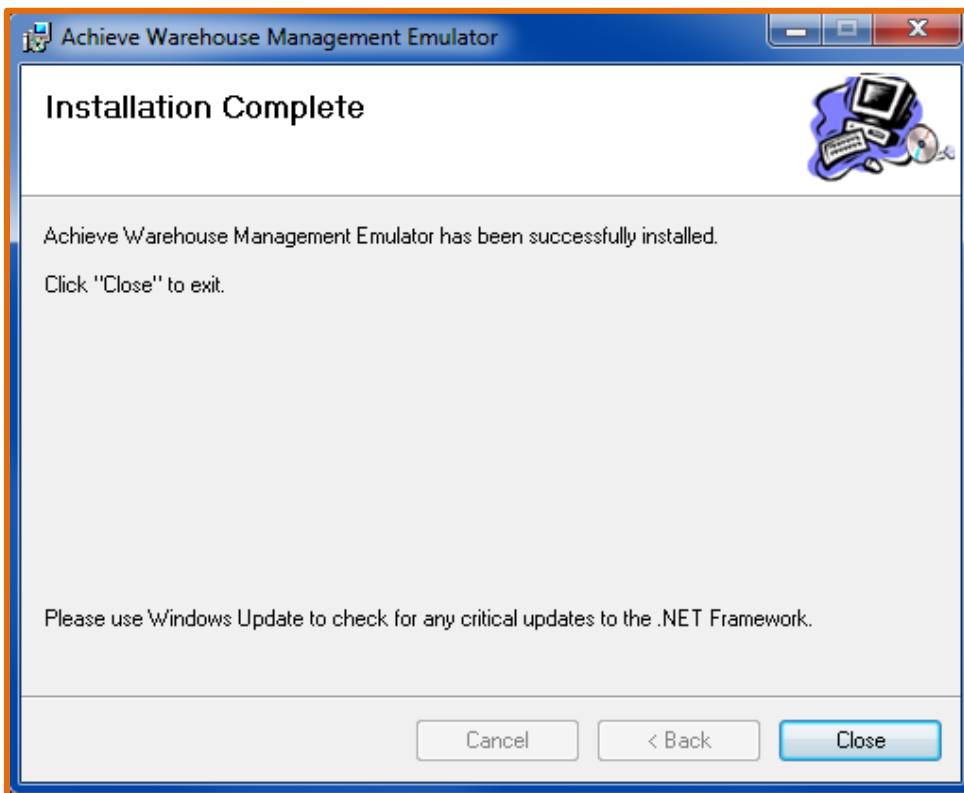
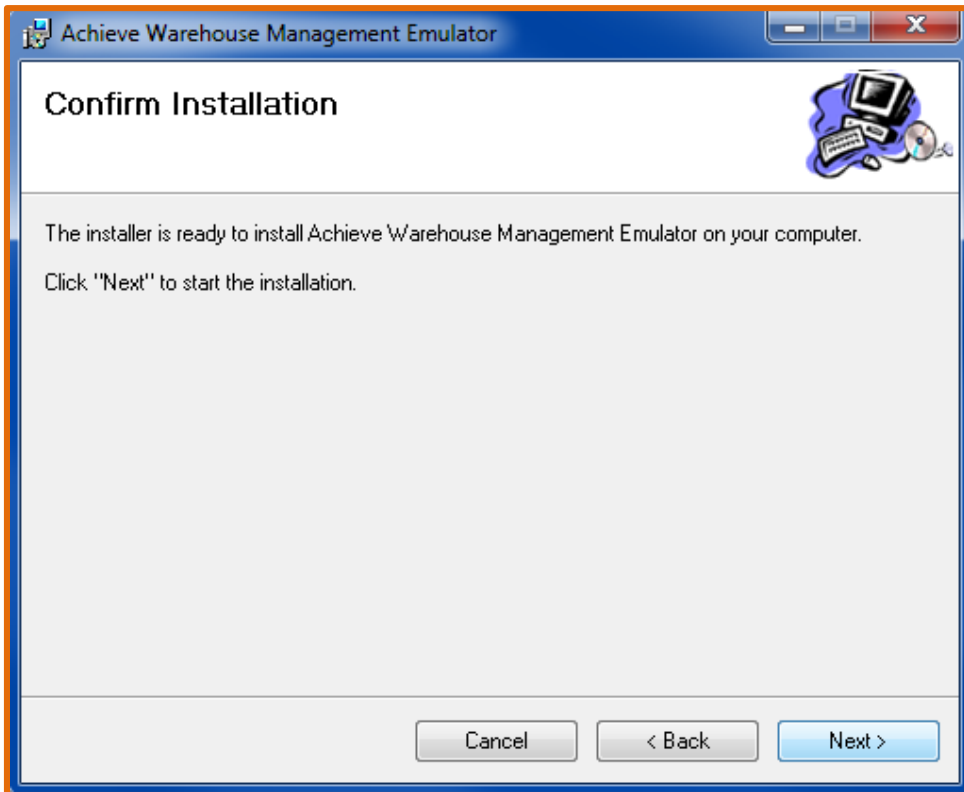
First we need to find the emulator setup file; it can usually be found on your SAP Server under C:\SAPInstall\AIS Drops. Note, if you are unsure which version number you should be installing, contact your Achieve IT support team.

Once you find the emulator folder, you will need to copy it the desired workstation. After that is done, inside the folder you will see a file called setup.exe. Right click on it and select “Run as Administrator”.

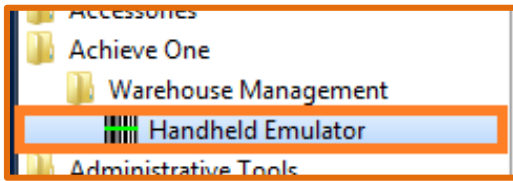


The installation will begin; hit “Next” when you are prompted to, until the installation has completed.



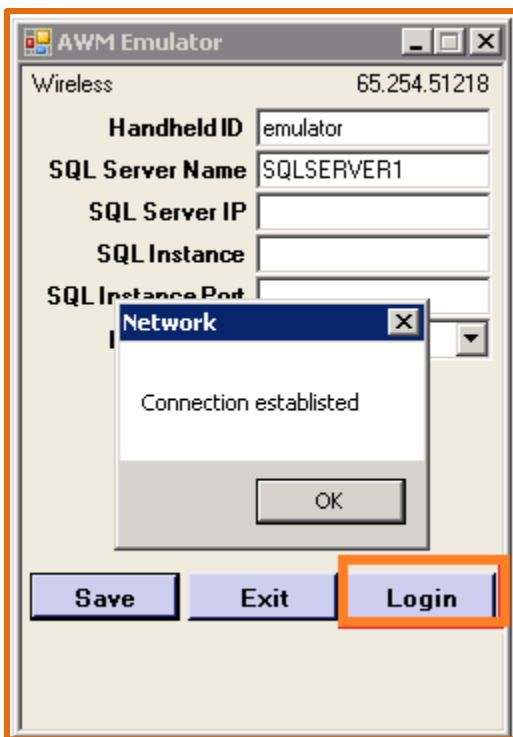


After the emulator is installed, you can find it in the Start Menu under Achieve One > Warehouse Management > Handheld Emulator.



When you open it, it will bring you to the setup screen. First enter in a Handheld ID; it is important that all handhelds/emulators have unique Handheld IDs or it may cause conflicts. There are then four fields related to the SQL server connection. The only one that is required is the SQL Server Name, but you may need to have the other three filled in depending on your network settings. Once all your information is entered, hit Save and it will let you know if it can connect or not. If it does not connect you may need to contact your IT department to confirm the connection information.

Once it is connected you will see that the “Login” button becomes available to select.



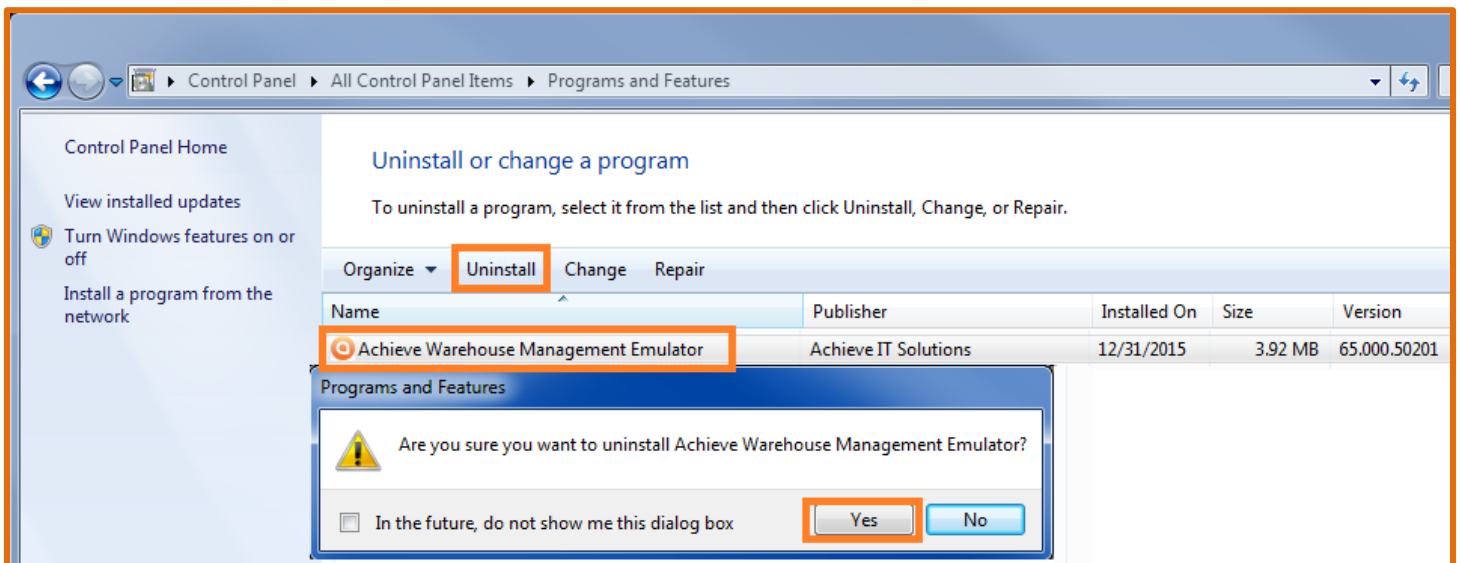
Selecting the Login button will bring you to the Login screen for WMS. Select your database, then enter in your User ID, Password, and Warehouse. Once all that information is entered you should be able to log in and your installation is complete.



Upgrade

When upgrading your version of the emulator, the process is exactly the same except for 2 small differences.

First, before you install the new version you will need to manually uninstall the old version. To do this, use the standard windows process for uninstalling programs; go to Control Panel > All Control Panel Items > Programs and Features; highlight Achieve Warehouse Management Emulator, select Uninstall, and follow the prompts.



Second, even though you un-installed the old version, it should save your connection information from the setup screen, so you should not have to enter that in again.

Other than that, just follow the new install process and you will be all set.